

EQUIP. TYPE R3904/URR EXP. NO.

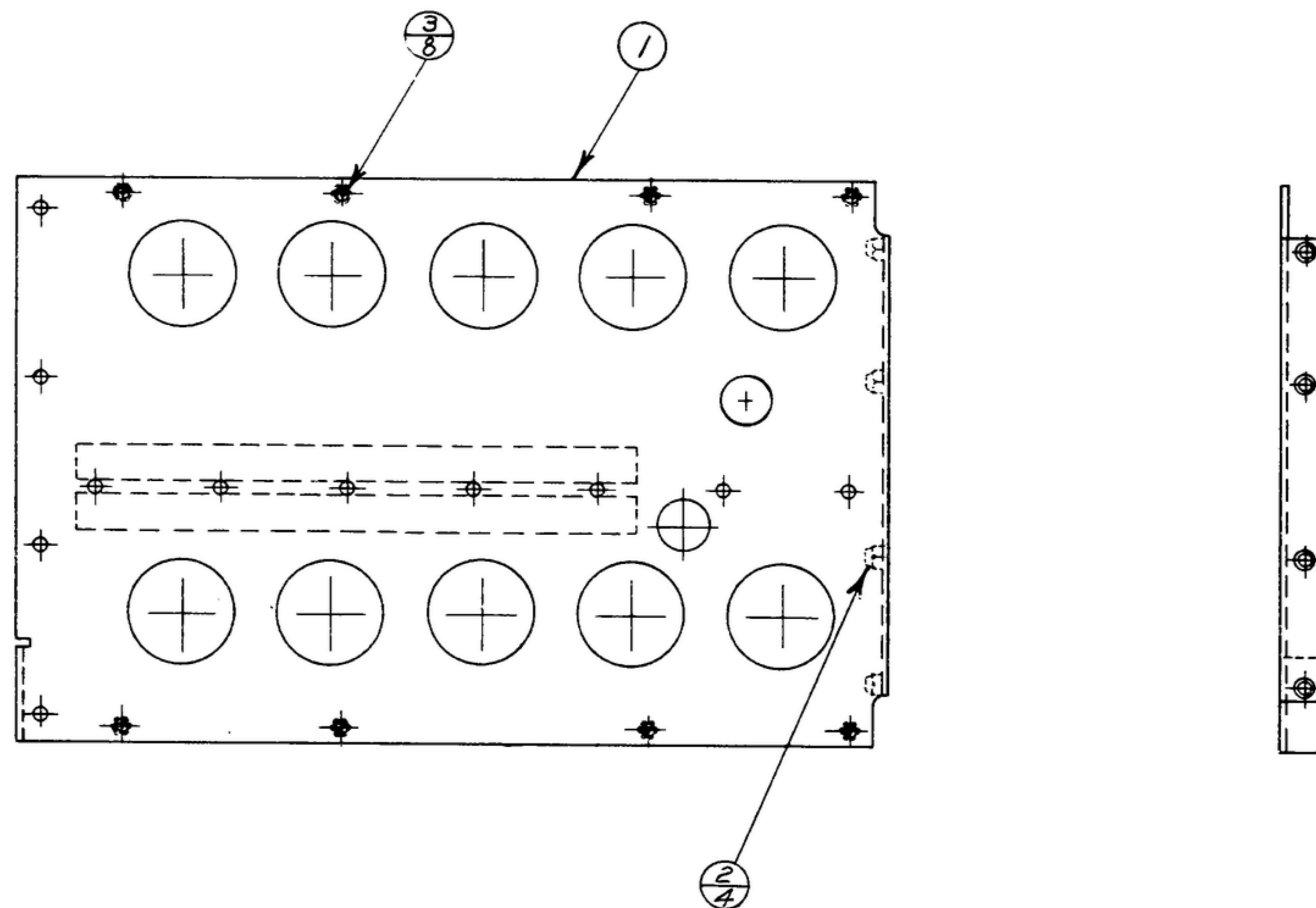
COL. 540-7935-003

NOTICE: WHEN GOVERNMENT DRAWINGS, SPECIFICATIONS, OR OTHER DATA ARE USED FOR ANY PURPOSE OTHER THAN IN CONNECTION WITH A SPECIFICALLY RELATED GOVERNMENT PROCUREMENT OPERATION, THE UNITED STATES GOVERNMENT THEREBY INCURS NO LIABILITY FOR ANY INADEQUACIES THEREOF AND THE FACT THAT THE GOVERNMENT MAY HAVE FORWARDED, PROVIDED, OR IN ANY WAY SUPPLIED THE SAID DRAWINGS, SPECIFICATIONS, OR OTHER DATA IS NOT TO BE REGARDED AS IMPLICATION OR ENDORSEMENT AS TO ANY CLAIMS CONCERNING THE INVENTION OR OTHER PATENT RIGHTS OR OTHER RIGHTS OR PRIVILEGES TO INVENTION, DESIGN, OR OTHER PATENTED INVENTION THAT MAY IN ANY WAY BE RELATED THEREIN.

THIS DOCUMENT HAS BEEN FORWARDED BY THE GOVERNMENT AND MAY BE REPRODUCED AND USED IN CONNECTION WITH ANY GOVERNMENT PROCUREMENT OR MAINTENANCE OPERATION.

\* FOR INFORMATION ONLY. CONTRACTOR MAY AT HIS OPTION DEVIATE FROM THESE PROCESS DETAILS.

REVISIONS			
SYM	DESCRIPTION	DATE	APPROVAL



- NOTES:
1. Press & Roll Nut (2) INTO FRAME (1) AS SHOWN.
  2. PRESS (ONLY) NUT (3) INTO FRAME (1) AS SHOWN.
  3. IN ALL SPLIT BALLOONS, TOP FIGURE IS MATERIAL LIST ITEM INDICATOR & BOTTOM FIGURE IS QUANTITY.

COLLINS PART NO.	ITEM	REQD	PART NO.	DESCRIPTION	MATL	MATL SPEC
<del>559 0257 003</del>	3	8	SM-C-283166-4	NUT-INSERT CAPTIVE		
<del>555 9252 002</del>	2	4	SM-B-283164-2	NUT-STOP		
<del>558 0473 003</del>	1	1	SM-C-249121	FRAME-LEFTSIDE		

LIST OF MATERIAL COLLINS PART NO. 558-0473-003

DRAWN <i>ECS</i>				CHECKED <i>Plan</i>		APPROVED		COLLINS-RADIO CO. -SIGNAL CORPS FORM-1000A 14214-PH-51-93		DEPARTMENT OF THE ARMY SIGNAL CORPS ENGINEERING LABORATORIES FORT MONMOUTH NEW JERSEY SM-C-249127	
UNLESS OTHERWISE SPECIFIED: DECIMAL DIMENSIONS INCLUDING HOLE SIZES MAY VARY ±.008 FRACTIONAL DIMENSIONS INCLUDING HOLE SIZES MAY VARY ±1/64 MACHINED ANGLES MAY VARY ±1° SHEARED ANGLES MAY VARY ±.25° BROKEN ANGLES MAY VARY ±1° ECCENTRICITY BETWEEN ANY DIAMETERS ON THE SAME CENTERLINE SHALL NOT EXCEED .010 TOTAL INDICATOR READING. ALL DIMENSIONS ARE FINISH DIMENSIONS INCLUDING APPLIED FINISH AND ARE GIVEN IN INCHES.				SIGNAL CORPS		REVIEWED <i>PME</i>		FRAME ASSY - LEFT SIDE			
558-0492-004 1 SM-D-249140 SC-DL-248175				APPROVED <i>HLV</i> <i>PME</i>		DATE <i>3 JAN 56</i>					
APPLICATION				SCALE <i>1/2</i>							

WHEN REFERRING TO THIS DRAWING STATE DRAWING NO., APPLICABLE ISSUE SYMBOL, IF ANY, AND DATE